



AKE
MRW*: 1,588 Kg (3,500lbs)
Volume: 4.3 m³ (153 ft³)
GOH** provisions



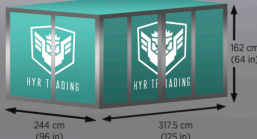
XYX
MRW*: 750 Kg (1,658lbs)
Volume: 2.17 m³ (76.6 ft³)
GOH** provisions



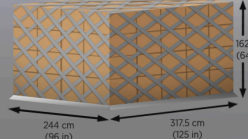
RAP - Cool Container
MRW*: 6,033 Kg (13,337 lbs) Main Deck
4,626 Kg (10,226 lbs) Belly
Volume: 8.5 m³ (302 ft³)



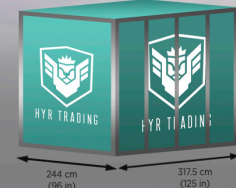
AMP
MRW*: 6,804 Kg (15,000lbs) Main Deck
5,035 Kg (11,100 lbs) Belly
Volume: 10.85 m³ (382 ft³)
GOH** provisions



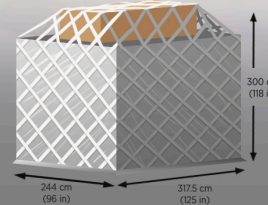
PMC Belly
MRW*: 5,035 Kg (11,100lbs) Belly
Volume: up to 10.85 m³ (382 ft³)



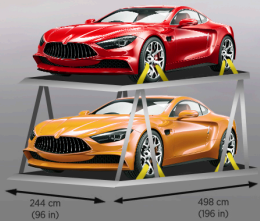
AMA
MRW*: 6,804 Kg (15,000lbs)
Volume: up to 15.18 m³ (536 ft³)
GOH** provisions



PMC Q7
MRW*: 6,804 Kg (15,000lbs) Main Deck
Volume: up to 19.35 m³ (683 ft³)



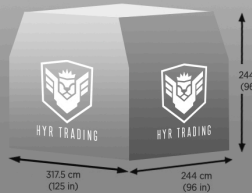
DUBLE CARRACK



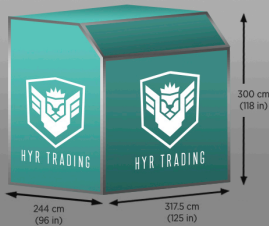
P1A
MRW*: 3,701 Kg (8,159 lbs)
Volume: 15.00 m³ (540 ft³)



P2A
MRW*: 3,701 Kg (8,159 lbs)
Volume: 17.00 m³ (607 ft³)



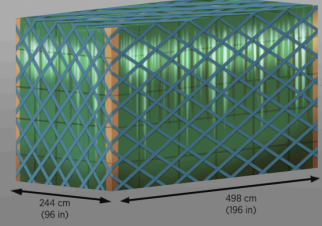
AMD
MRW*: 6,804 Kg (15,000 lbs)
Volume: 19.35 m³ (683 ft³)



HMC (Collapsible Horse Stall)
MRW*: 6,804 Kg (15,000 lbs)
Volume: 10.85 m³ (383 ft³)



PRF - 16 Ft Pallet
MRW*: 11,340 Kg (25,000 lbs)
23,700 Kg (53,317 lbs) with additional restraints on the aircraft
Volume: 30.3 m³ (1,070 ft³)



PGF - 20 Ft Pallet
MRW*: 11,340 Kg (25,000 lbs)
28,800 Kg (63,490 lbs) with additional restraints on the aircraft
Volume: 36.8 m³ (1,303 ft³)

